

***Linton Meagher***  
***Wonderland***

---

2022

CATALOGUE

## Exhibition statement

Wonderland City was an amusement park at Tamarama set up in 1906 by William Anderson, modelled on Coney Island. Crowds of up to 2000 people visited each weekend. A rollercoaster, an airship ride called "Airem Scarem" and an elephant called Alice were some of the attractions.

However, the attraction wore off, debts mounted, and Wonderland City closed in 1911. To prevent fare evasion, Anderson installed a barbed wire fence across the beach at Tamarama, preventing local swimmers from accessing the water. This did not go down well with the locals and was a key factor in Wonderland's demise.

This exhibition references memories of Wonderland. Tempera (pigment mixed with egg yolk) has a translucency that allows for layering, and it can also be scratched off or erased. Hence, tempera is ideally suited to the representation of memory.

Tempera was used extensively up until the 1500s in Italy, when it was superseded by oil paint. Tempera was frequently used in conjunction with gold leaf in Byzantine, medieval and early renaissance panel paintings to represent sacred objects and to show devotion.

Tempera has been paired with gold leaf in the Wonderland exhibition to reflect secular spirituality and the veneration shown by Sydneysiders to the spectacular beach and cliff-scapes. The use of resin is a nod to the surf culture of the beaches and represents an extension of his previous resin works.



## **Unleash**

**\$6,900**

Tempera, acrylic and resin on gold leaf on board  
61 x 46cm



t. 02 9331 4676  
e. [mw\\_art@bigpond.net.au](mailto:mw_art@bigpond.net.au)  
[www.maunsellwickes.com](http://www.maunsellwickes.com)



## **Tamarama cliff (purple haze)**

**\$6,900**

Tempera on board  
61 x 46cm



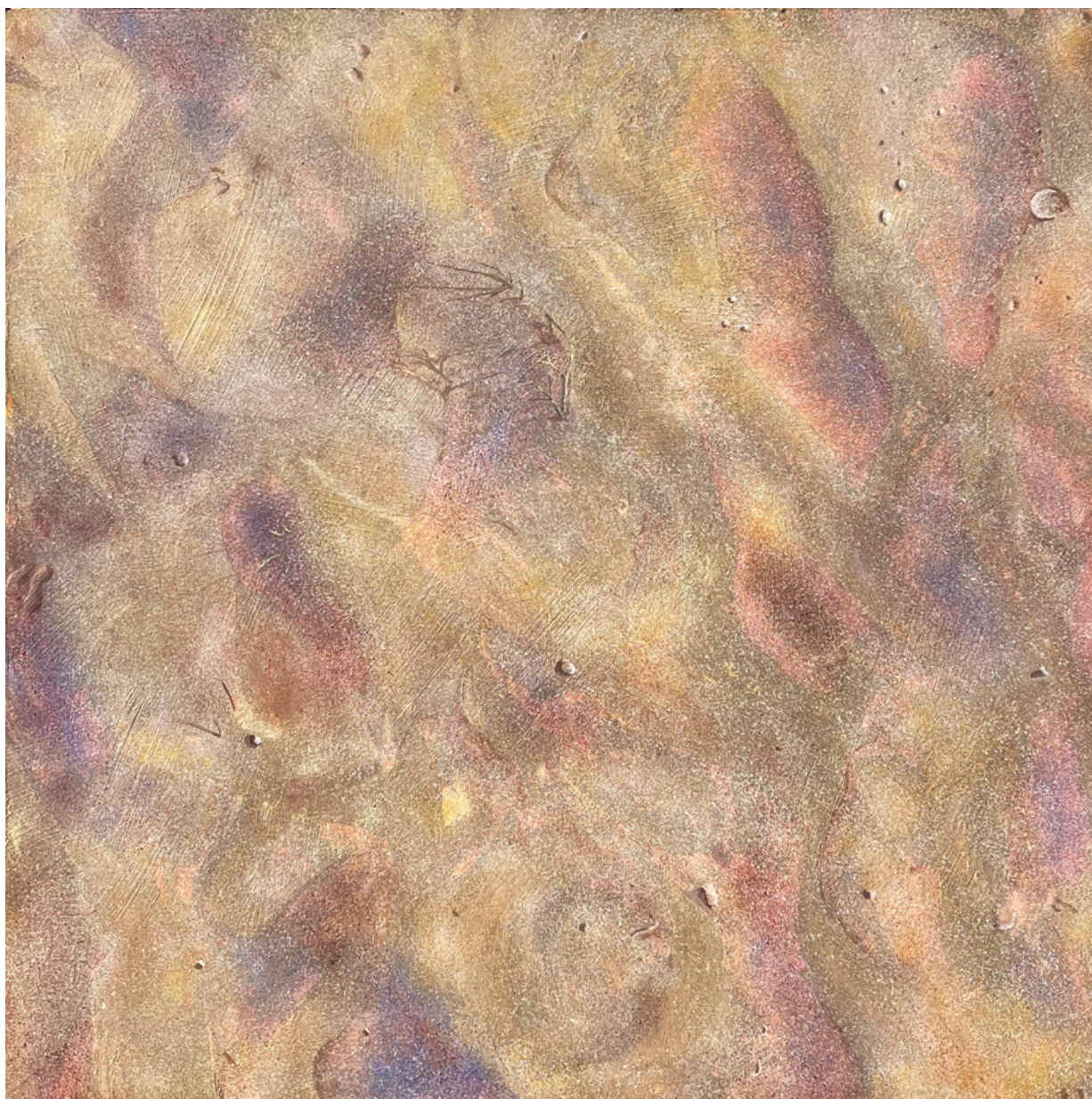
t. 02 9331 4676  
e. [mw\\_art@bigpond.net.au](mailto:mw_art@bigpond.net.au)  
[www.maunsellwickes.com](http://www.maunsellwickes.com)



## **Green shoots**

**\$9,500**

Tempera and gold leaf on board  
93 x 94cm





## **Tamarama cliff**

**\$6,900**

Tempera on board  
64 x 46cm





## ***I heart surfing***

**\$6,900**

Tempera, acrylic and resin on gold leaf on board  
61 x 46cm



t. 02 9331 4676  
e. [mw\\_art@bigpond.net.au](mailto:mw_art@bigpond.net.au)  
[www.maunsellwickes.com](http://www.maunsellwickes.com)



## Airem scarem

\$6,900

Tempera and resin on board  
61 x 46cm



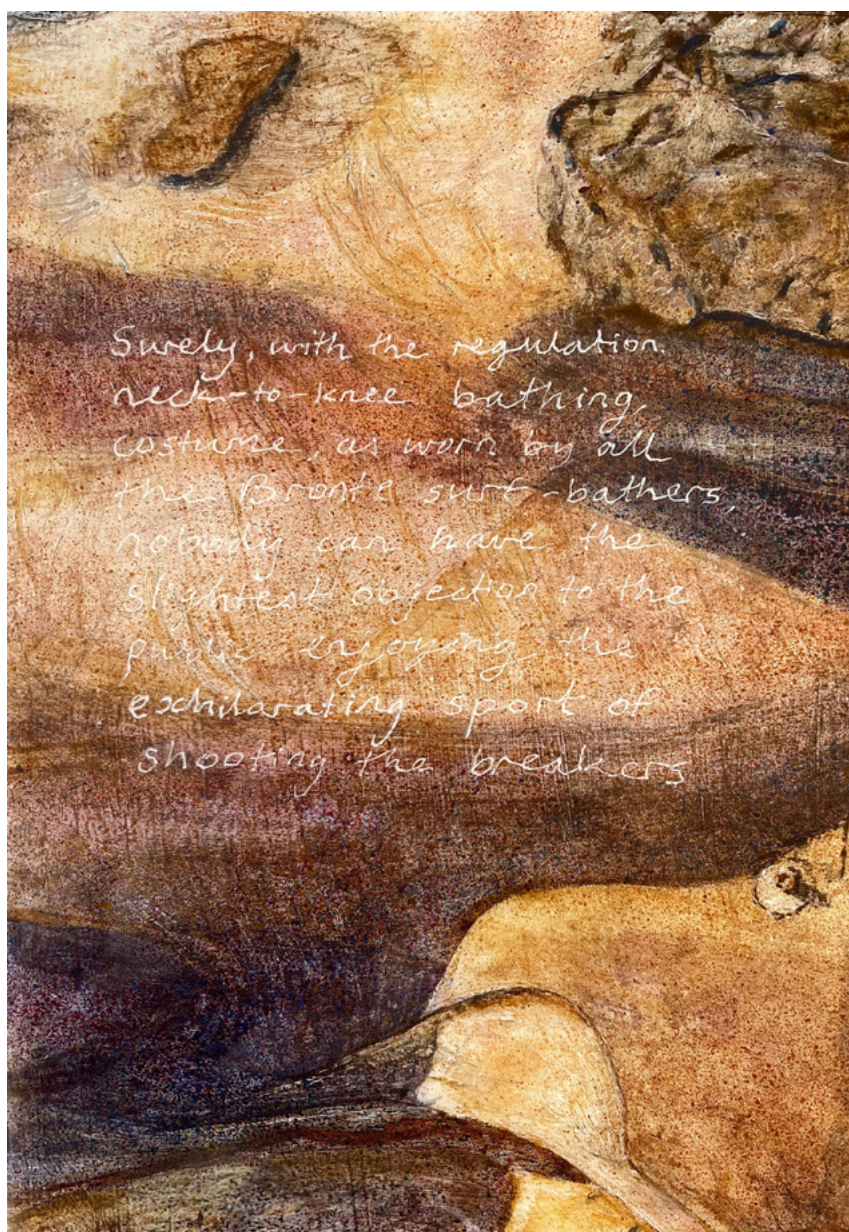
t. 02 9331 4676  
e. [mw\\_art@bigpond.net.au](mailto:mw_art@bigpond.net.au)  
[www.maunsellwickes.com](http://www.maunsellwickes.com)



## Bronte surf-bathers

\$3,900

Tempera and resin on board  
25.5 x 18.5cm





## Alice (and dog walker) in Wonderland

\$5,900

Tempera, acrylic and resin on board  
61 x 46cm



t. 02 9331 4676  
e. [mw\\_art@bigpond.net.au](mailto:mw_art@bigpond.net.au)  
[www.maunsellwickes.com](http://www.maunsellwickes.com)



## **Alice and neurons**

**\$5,900**

Tempera, acrylic and resin on board  
61 x 46cm



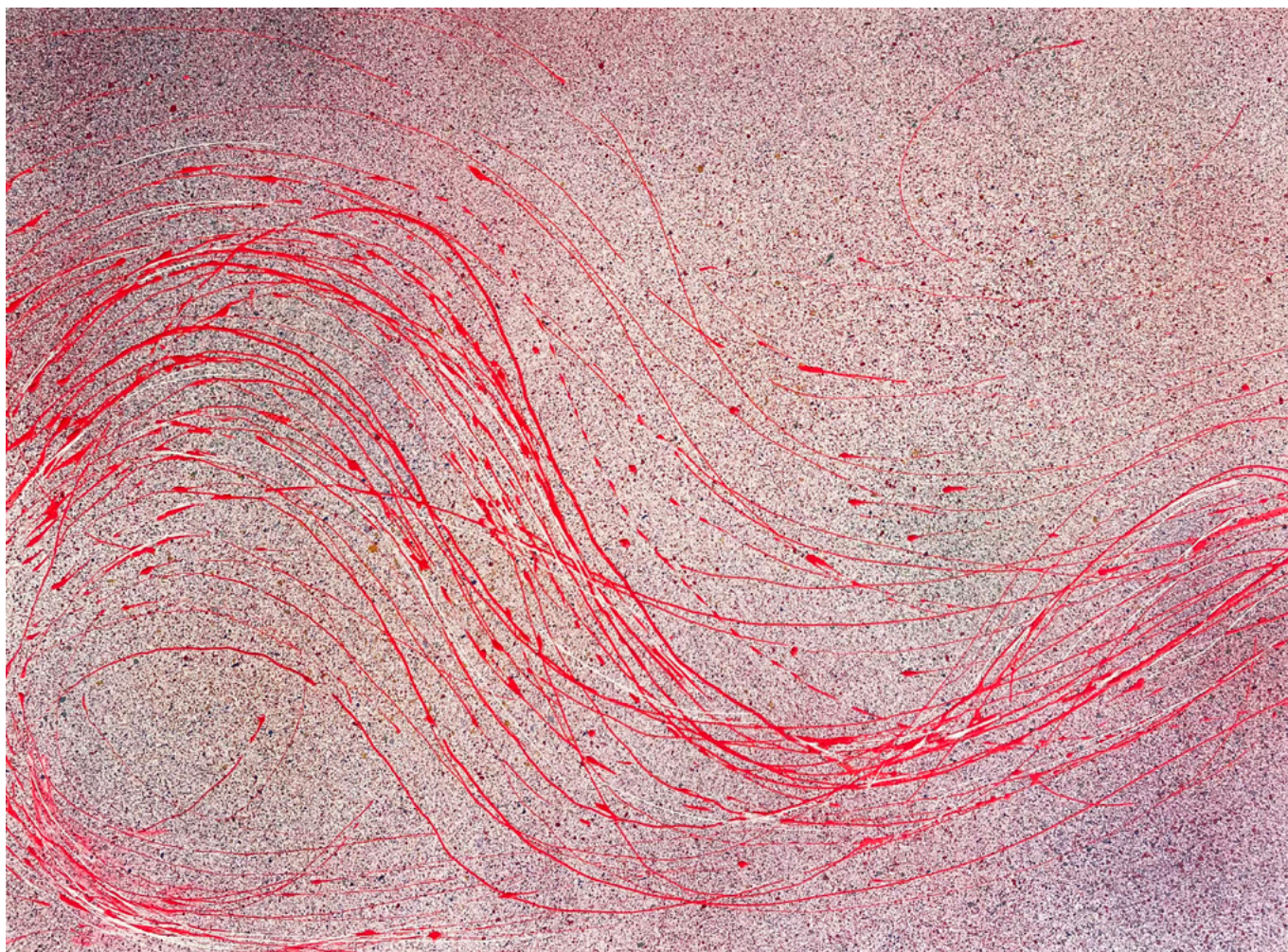
t. 02 9331 4676  
e. [mw\\_art@bigpond.net.au](mailto:mw_art@bigpond.net.au)  
[www.maunsellwickes.com](http://www.maunsellwickes.com)



## **Splatter fade neurons**

**\$4,250**

Tempera, acrylic and resin on board  
40.5 x 30.5cm



t. 02 9331 4676  
e. [mw\\_art@bigpond.net.au](mailto:mw_art@bigpond.net.au)  
[www.maunsellwickes.com](http://www.maunsellwickes.com)



## **Sunbathers above Bronte pool**

**\$7,500**

Tempera, acrylic, gold leaf and resin on board  
74 x 50cm





## **Tamarama cathedral**

**\$7,200**

Tempera, gold leaf and resin on board  
63.5 x 57.5cm





## **Rock pool and cliffs on the walk around to Mackenzies**

**\$4,900**

Tempera, gold leaf and resin on board  
37.5 x 33cm



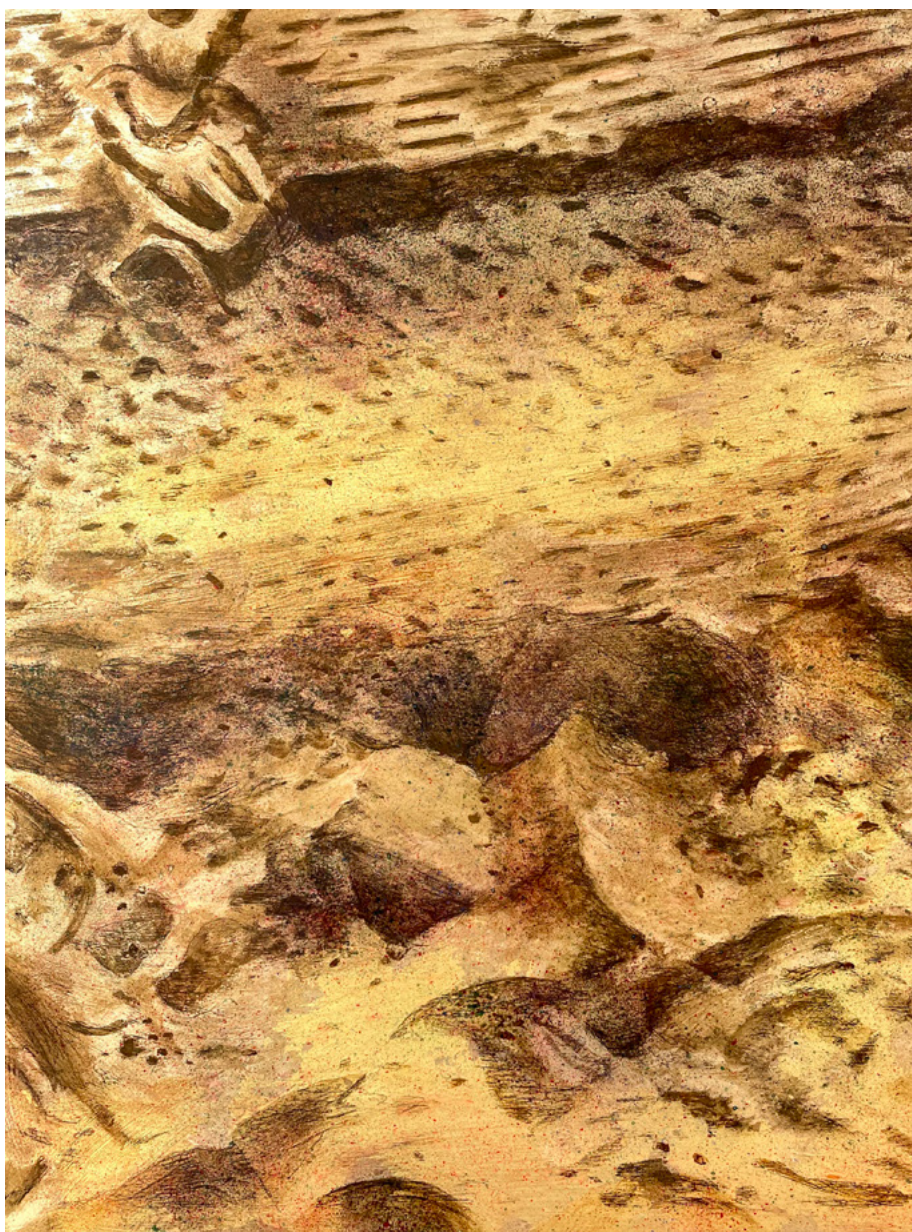
t. 02 9331 4676  
e. [mw\\_art@bigpond.net.au](mailto:mw_art@bigpond.net.au)  
[www.maunsellwicks.com](http://www.maunsellwicks.com)



## Tracks

\$6,500

Tempera and resin on gold leaf on board  
61 x 46cm





## **Golden shoreline**

**\$3,900**

Tempera and resin on gold leaf on board  
37 x 28cm



t. 02 9331 4676  
e. [mw\\_art@bigpond.net.au](mailto:mw_art@bigpond.net.au)  
[www.maunsellwickes.com](http://www.maunsellwickes.com)



## Willie

\$3,900

Tempera and resin on board  
32.5 x 25.5cm



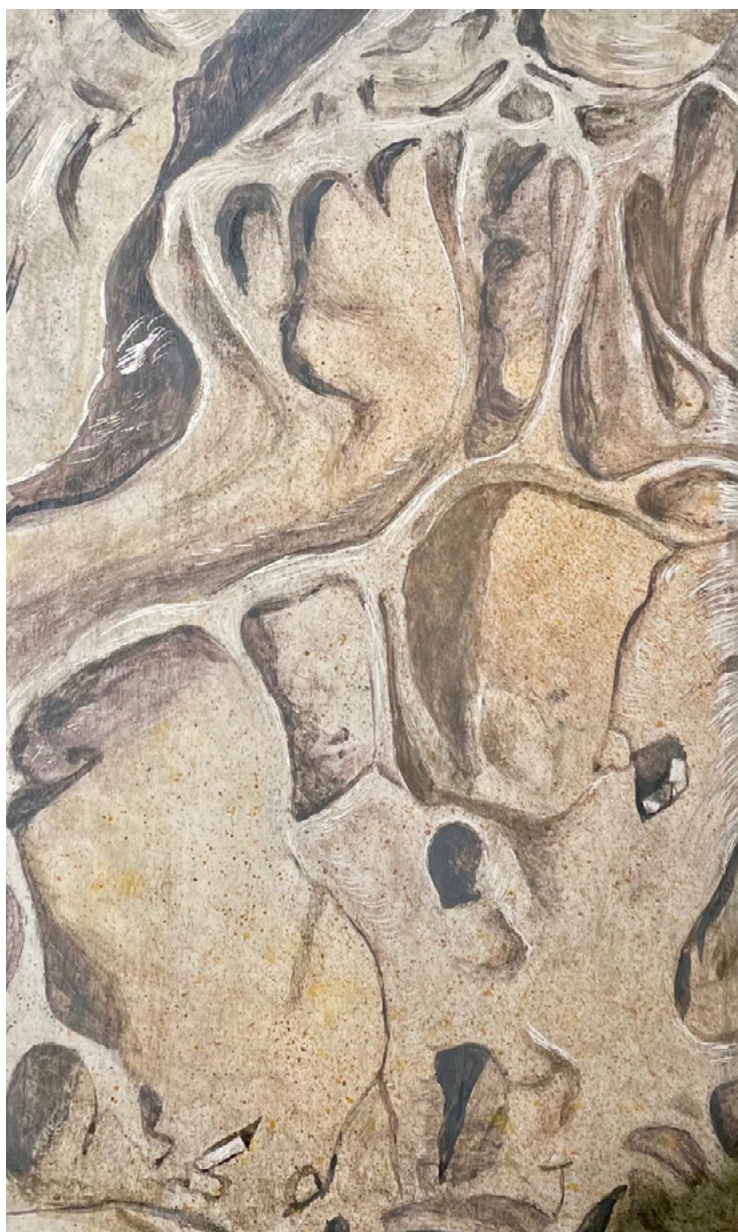
t. 02 9331 4676  
e. [mw\\_art@bigpond.net.au](mailto:mw_art@bigpond.net.au)  
[www.maunsellwicks.com](http://www.maunsellwicks.com)



## **No butts**

**\$3,900**

Tempera and resin on board  
39 x 23.5cm



t. 02 9331 4676  
e. [mw\\_art@bigpond.net.au](mailto:mw_art@bigpond.net.au)  
[www.maunsellwickes.com](http://www.maunsellwickes.com)



## **Rock overhang**

**\$2,900**

Tempera, gold leaf and resin on board  
35 x 19cm



t. 02 9331 4676  
e. [mw\\_art@bigpond.net.au](mailto:mw_art@bigpond.net.au)  
[www.maunsellwickes.com](http://www.maunsellwickes.com)



Alice reference National Museum of Australia



Wonderland looking south to Bronte



Wonderland air ship  
Copyright State Library of NSW



t. 02 9331 4676  
e. [mw\\_art@bigpond.net.au](mailto:mw_art@bigpond.net.au)  
[www.maunsellwicks.com](http://www.maunsellwicks.com)



## **Artist bio**

Born in 1975 in Sydney, Linton Meagher studied art at the Julian Ashton School and the University of Sydney, completing a Bachelor of Arts majoring in Fine Arts.

Meagher's exhibition "Wonderland" represents a return to painting. Having trained at the University of Sydney and Julian Ashton Art School, his focus in the early 90s was on tempera and oil painting. Subsequently his practice evolved to making semi-sculptural works using resin and Perspex.

Meagher's work is represented by Maunsell Wickes Gallery in Sydney. He was previously showing with the Cat Street Gallery in Hong Kong and COMODAA Gallery in London. He has had multiple solo and group exhibitions in Sydney, London and Hong Kong. His work has also been exhibited at Sculpture by the Sea (Bondi) in 2014, 2016 and 2017 and in the Hong Kong Art Fair and Singapore Art Fair. In addition to numerous private and corporate collections, commissions include St Vincent's Public Hospital and Blackmores in Sydney.

Further information and images can be found at [www.lintonmeagher.com](http://www.lintonmeagher.com).



t. 02 9331 4676  
e. [mw\\_art@bigpond.net.au](mailto:mw_art@bigpond.net.au)  
[www.maunsellwickes.com](http://www.maunsellwickes.com)





mw

**maunsell wickes**

19 glenmore road  
paddington nsw 2021  
t. 02 9331 4676

e. [mw\\_art@bigpond.net.au](mailto:mw_art@bigpond.net.au)  
tues-sat 11-5.30pm sun 12-5pm  
[www.maunsellwickes.com](http://www.maunsellwickes.com)